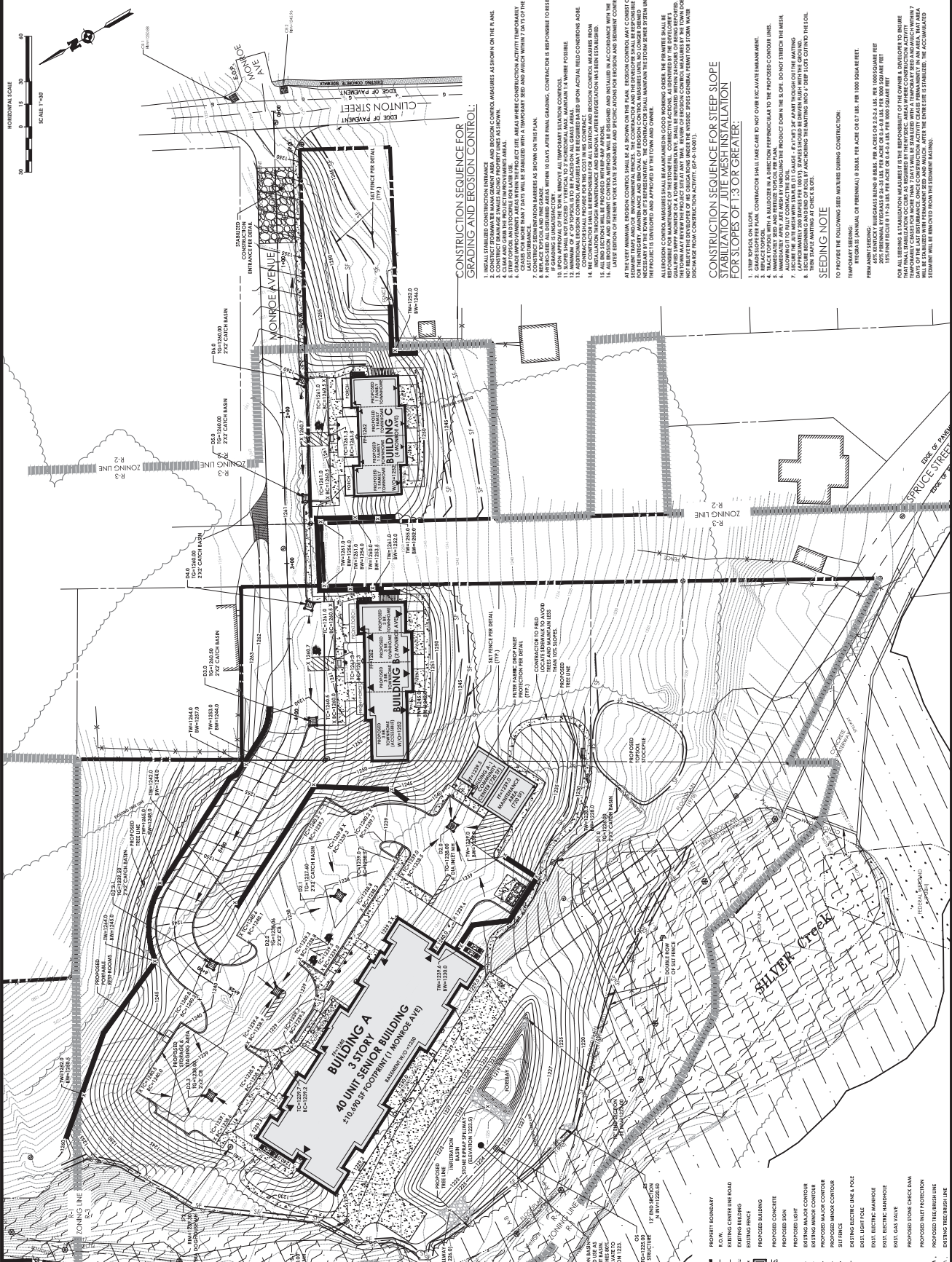


| REVISIONS |                           |
|-----------|---------------------------|
| NO.       | DESCRIPTION               |
| 1         | ISSUED FOR PERMITS        |
| 2         | REVISED PER CITY COMMENTS |
| 3         | REVISED PER CITY COMMENTS |
| 4         | REVISED PER CITY COMMENTS |

**90% CONSTRUCTION DOCUMENTS**  
**GRADING PLAN**  
**ONEONTA HEIGHTS**  
 CENTRAL STREET  
 ONEONTA, NY 13820

DATE: 08/14/2018  
 PROJECT NO.: 20141930.0001  
 SHEET NO.: C 103  
 OF 3  
 SCALE: 1"=30'  
 DATE: 7/31/2015



**CONSTRUCTION SEQUENCE FOR GRADING AND EROSION CONTROL:**

1. INSTALL STABILIZED CONSTRUCTION ENTRANCE
2. CONSTRUCT STORMWATER MANAGEMENT PANS AND EROSION CONTROL MEASURES AS SHOWN ON THE PLAN
3. CLEAR AND GRAB THE PROJECT IMPROVEMENT AREAS
4. GRAB THE IMPROVEMENT AREAS WITHIN THE PROJECT SITE. AREAS WHERE CONSTRUCTION ACTIVITY IS TEMPORARILY REQUIRED SHALL BE PROTECTED WITH EROSION CONTROL MEASURES AND ADJUST REGULARLY DURING THE COURSE OF CONSTRUCTION
5. LAY OUT EROSION CONTROL MEASURES AS SHOWN ON THE PLAN
6. EROSION CONTROL MEASURES SHALL BE INSTALLED AND MAINTAINED THROUGHOUT THE CONSTRUCTION PERIOD
7. EROSION CONTROL MEASURES SHALL BE MAINTAINED THROUGHOUT THE CONSTRUCTION PERIOD
8. EROSION CONTROL MEASURES SHALL BE MAINTAINED THROUGHOUT THE CONSTRUCTION PERIOD
9. EROSION CONTROL MEASURES SHALL BE MAINTAINED THROUGHOUT THE CONSTRUCTION PERIOD
10. EROSION CONTROL MEASURES SHALL BE MAINTAINED THROUGHOUT THE CONSTRUCTION PERIOD
11. EROSION CONTROL MEASURES SHALL BE MAINTAINED THROUGHOUT THE CONSTRUCTION PERIOD
12. EROSION CONTROL MEASURES SHALL BE MAINTAINED THROUGHOUT THE CONSTRUCTION PERIOD
13. EROSION CONTROL MEASURES SHALL BE MAINTAINED THROUGHOUT THE CONSTRUCTION PERIOD
14. EROSION CONTROL MEASURES SHALL BE MAINTAINED THROUGHOUT THE CONSTRUCTION PERIOD
15. EROSION CONTROL MEASURES SHALL BE MAINTAINED THROUGHOUT THE CONSTRUCTION PERIOD
16. EROSION CONTROL MEASURES SHALL BE MAINTAINED THROUGHOUT THE CONSTRUCTION PERIOD
17. EROSION CONTROL MEASURES SHALL BE MAINTAINED THROUGHOUT THE CONSTRUCTION PERIOD
18. EROSION CONTROL MEASURES SHALL BE MAINTAINED THROUGHOUT THE CONSTRUCTION PERIOD
19. EROSION CONTROL MEASURES SHALL BE MAINTAINED THROUGHOUT THE CONSTRUCTION PERIOD
20. EROSION CONTROL MEASURES SHALL BE MAINTAINED THROUGHOUT THE CONSTRUCTION PERIOD

**CONSTRUCTION SEQUENCE FOR STEEP SLOPE STABILIZATION/ JUTE MESH INSTALLATION FOR SLOPES OF 1:3 OR GREATER:**

1. STEEP SLOPES ON SLOPE
2. EROSION CONTROL
3. EROSION CONTROL
4. EROSION CONTROL
5. EROSION CONTROL
6. EROSION CONTROL
7. EROSION CONTROL
8. EROSION CONTROL
9. EROSION CONTROL
10. EROSION CONTROL
11. EROSION CONTROL
12. EROSION CONTROL
13. EROSION CONTROL
14. EROSION CONTROL
15. EROSION CONTROL
16. EROSION CONTROL
17. EROSION CONTROL
18. EROSION CONTROL
19. EROSION CONTROL
20. EROSION CONTROL



**LEGEND:**

|          |                               |
|----------|-------------------------------|
| [Symbol] | PROPERTY BOUNDARY             |
| [Symbol] | EXISTING CENTER LINE ROAD     |
| [Symbol] | EXISTING BUILDING             |
| [Symbol] | EXISTING FENCE                |
| [Symbol] | PROPOSED BUILDING             |
| [Symbol] | PROPOSED CONCRETE             |
| [Symbol] | PROPOSED SIGN                 |
| [Symbol] | PROPOSED LIGHT                |
| [Symbol] | EXISTING MAJOR CONDUIT        |
| [Symbol] | PROPOSED MAJOR CONDUIT        |
| [Symbol] | PROPOSED MINOR CONDUIT        |
| [Symbol] | SILT FENCE                    |
| [Symbol] | EXISTING ELECTRIC LINE & POLE |
| [Symbol] | EXISTING LIGHT POLE           |
| [Symbol] | EXISTING TREE/ PLANTING       |
| [Symbol] | EXISTING FENCE/ FENCE         |
| [Symbol] | EXISTING GAS MAIN             |
| [Symbol] | PROPOSED TONE CHANCE ELEM     |
| [Symbol] | PROPOSED BILT PROTECTION      |
| [Symbol] | EXISTING TREE BOUNDARY        |