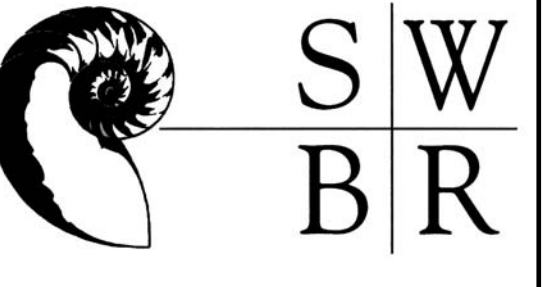
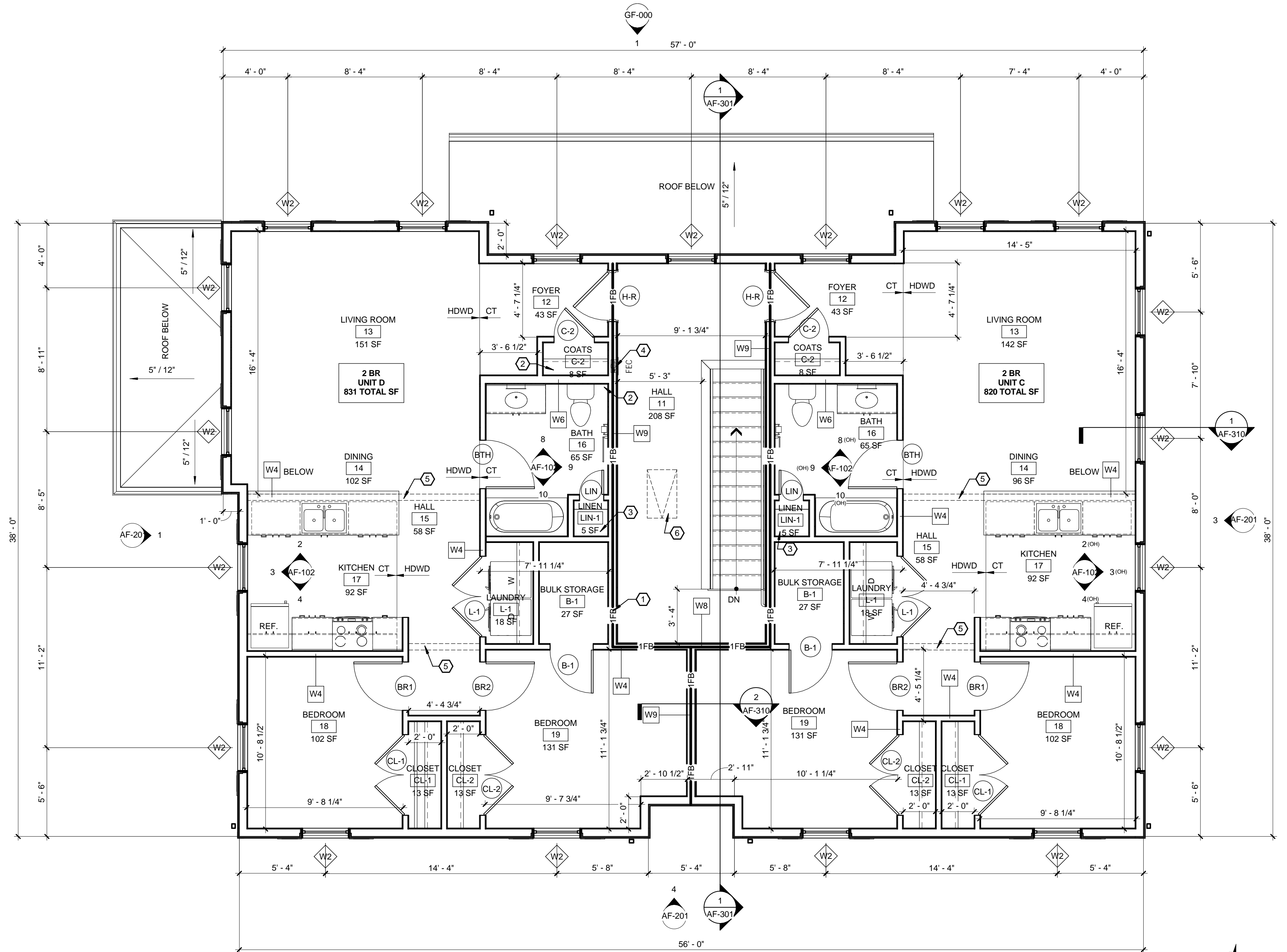


| PLAN KEY NOTES |  |
|----------------|--|
| NO.            | DESCRIPTION  |
| 1              | 4" VERTICAL PVC PASSIVE RADON MITIGATION PIPE FROM SUB DRAINAGE COURSE TO ABOVE ROOF. SEE ELECTRICAL DRAWINGS FOR ELECTRICAL JUNCTION BOX IN ATTIC FOR FUTURE IN-LINE FAN INSTALLATION |
| 2              | WIRE CLOSET ROD & SHELF  |
| 3              | 5 WIRE SHELVES, 18" DEEP ON HEAVY DUTY ADJUSTABLE BRACKETS & STANDARDS   |
| 4              | RECESSED FIRE EXTINGUISHER CABINET- FIRE EXTINGUISHERS BY OWNER  |
| 5              | DROPPED GYP. SOFFIT @ 7'-0" A.F.F.   |
| 6              | 22"x36" 1 HR RATED ATTIC ACCESS HATCH- COORDINATE WITH TRUSS LAYOUT  |
| 7              | ENCLOSED STRUCTURAL STEEL COLUMN WITH GYP. BD. AND 1-5/8" METAL STUD 1-HR RATED ASSEMBLY PER UL X531   |
| 8              | STRUCTURAL STEEL COLUMN WITH FOOTING- REFER TO STRUCTURAL DRAWINGS   |



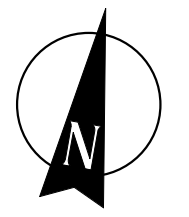
**387 East Main Street**  
 Rochester, NY 14604-2107  
 Voice: 585.232.8300  
 Fax: 585.232.9221  
 www.swbr.com

THESE DOCUMENTS AND ALL THE IDEAS, ARRANGEMENTS, DESIGNS AND PLANS INDICATED THEREON OR PRESENTED THEREBY ARE OWNED BY AND REMAIN THE PROPERTY OF SWBR ARCHITECTURE, ENGINEERING & LANDSCAPE ARCHITECTURE, P.C. AND NO PART THEREOF SHALL BE UTILIZED BY ANY PERSON FROM OUTSIDE CORPORATION FOR ANY PURPOSE WHATSOEVER EXCEPT WITH THE SPECIFIC WRITTEN PERMISSION OF SWBR ARCHITECTURE, ENGINEERING & LANDSCAPE ARCHITECTURE, P.C. ALL RIGHTS RESERVED.  
 ROCHESTER, NEW YORK



**1 SECOND FLOOR PLAN**  
 1/4" = 1'-0"

1,921 TOTAL SF



| REVISIONS |      |    |             |
|-----------|------|----|-------------|
| no.       | date | by | description |
|           |      |    |             |

**PROJECT:**  
 ONEONTA HEIGHTS  
 ONEONTA, NEW YORK

**CLIENT:**  
 HOUSING VISIONS  
 1201 EAST FAYETTE STREET  
 SUITE 26, SYRACUSE NY 13210

**DRAWING TITLE**  
 BUILDING F  
 SECOND FLOOR PLAN

|                    |            |       |
|--------------------|------------|-------|
| <b>DRAWING NO.</b> | drawn by   | DB    |
| <b>AF-103</b>      | checked    | EJG   |
|                    | proj. mgr. | EJG   |
|                    | proj. no.  | 14680 |

**STATUS:**  
 PROGRESS SET

**ISSUE DATE:**  
 8/21/2015