

7/24/2015 10:52:06 AM

FILE PATH: C:\1-Local Revit Models 2015\14680.00 Housing Visions Oneonta Apartments_Bldg E_ertcs.rvt

ELEVATION KEY NOTES	
NO.	DESCRIPTION
1	VINYL CLAPBOARD SIDING 5" EXPOSURE
2	PVC CORNER TRIM
3	ALUMINUM CLAD FASCIA
4	ASPHALT SHINGLES
5	RIDGE VENT
6	DECORATIVE PVC LOUVER
7	FIBERGLASS DOUBLE HUNG WINDOW
8	ACCENT SHAKER STYLE VINYL SIDING
9	FIBERGLASS ENTRY DOOR
10	METAK 5' K GUTTER
11	DOWNSPOUT
12	CONCRETE FOUNDATION
13	SLOPING CONCRETE PORCH
14	GLASS BLOCK WINDOW
15	STEEL WINDOW WELL
16	VINYL REINFORCED RAILING
17	RADON MITIGATION VENT PIPE
18	PVC COLUMN ENCLOSURE

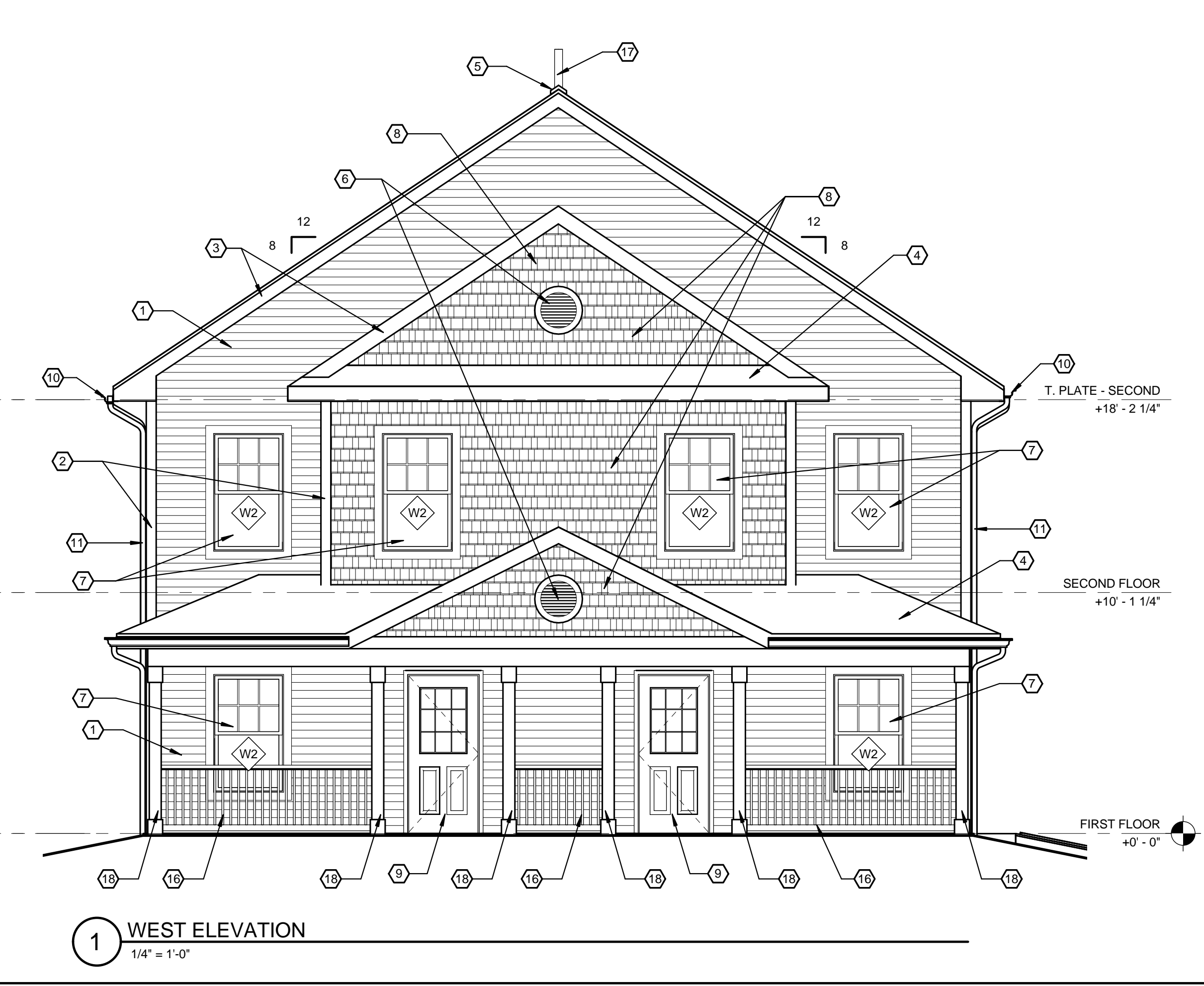
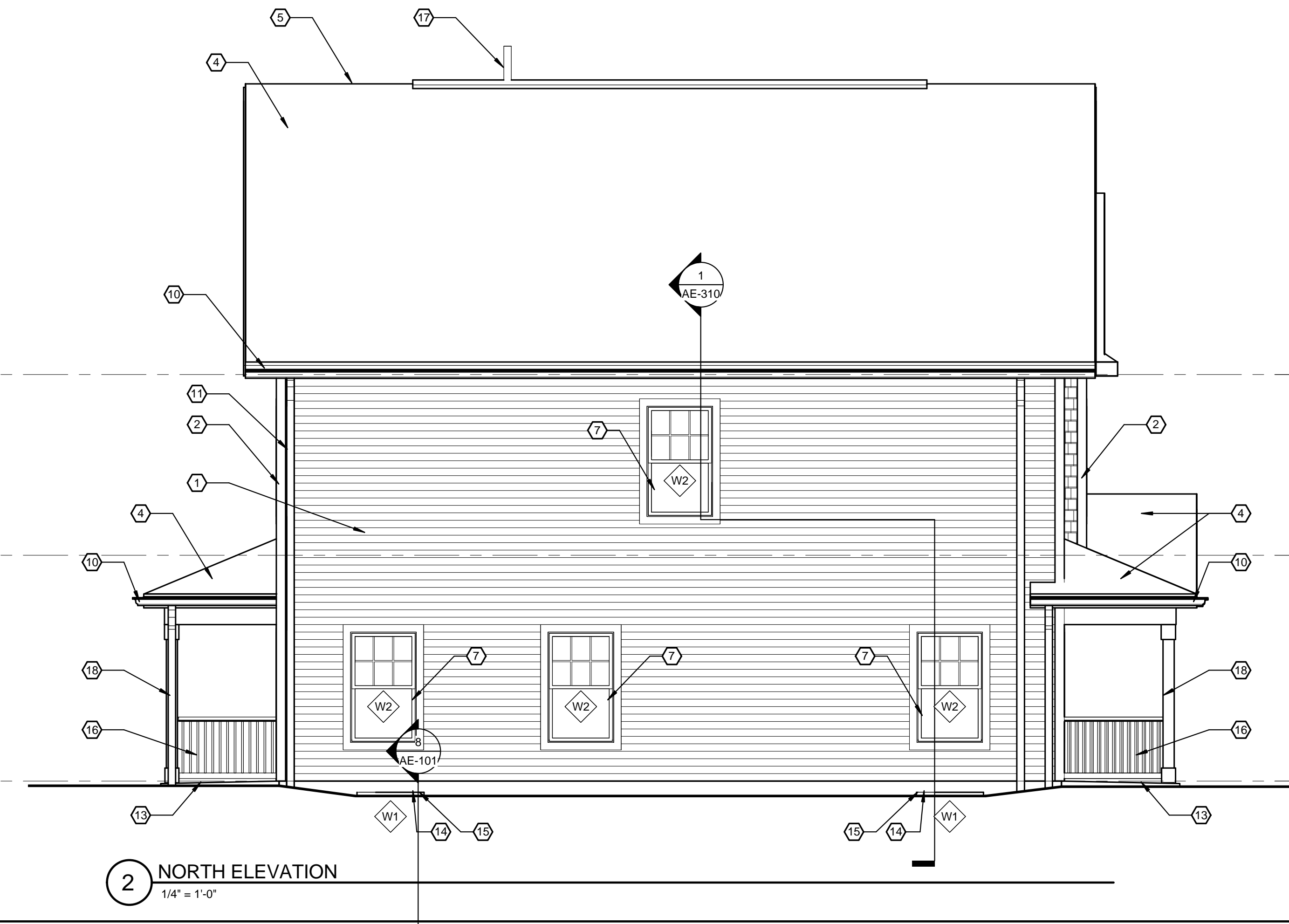
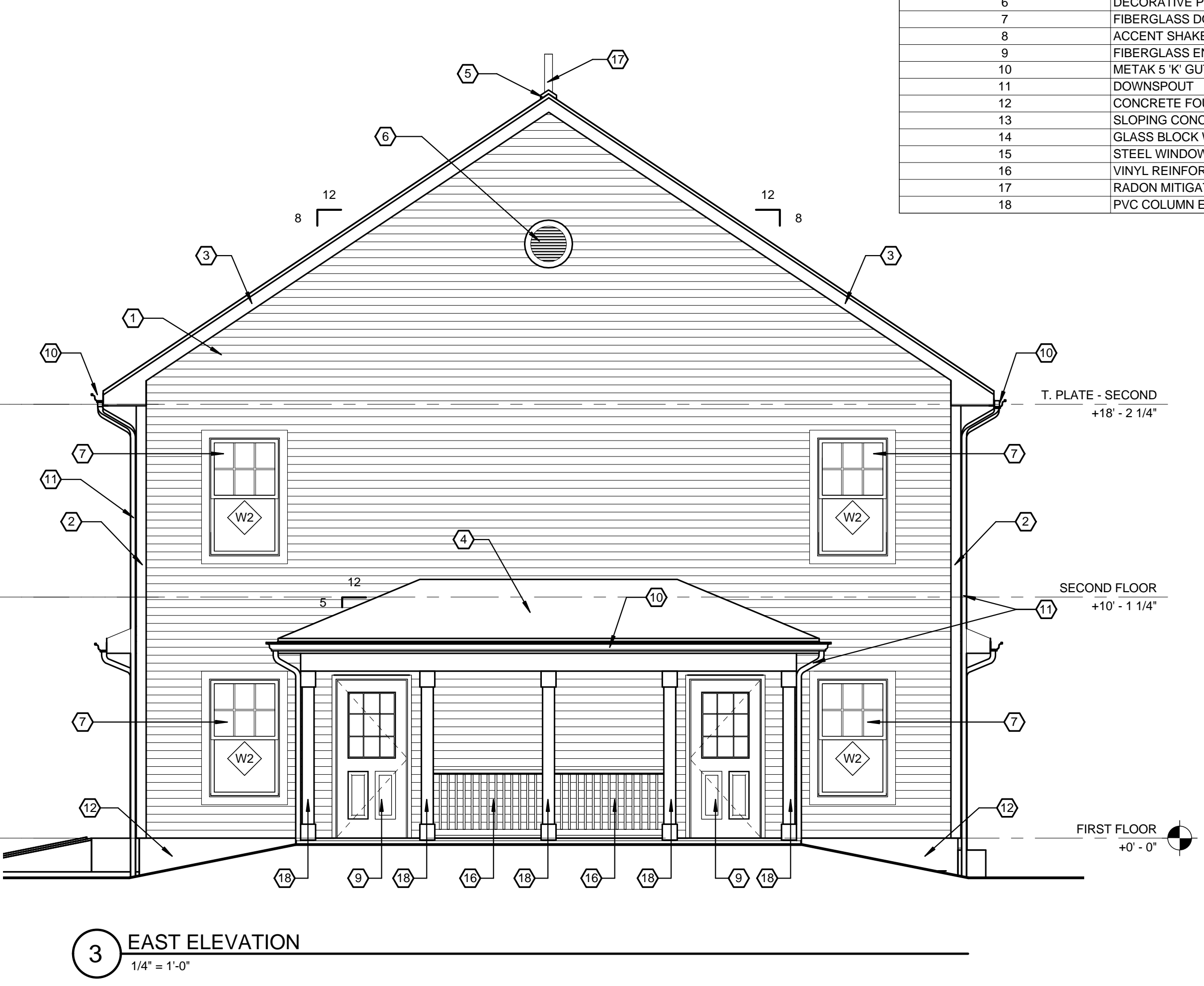
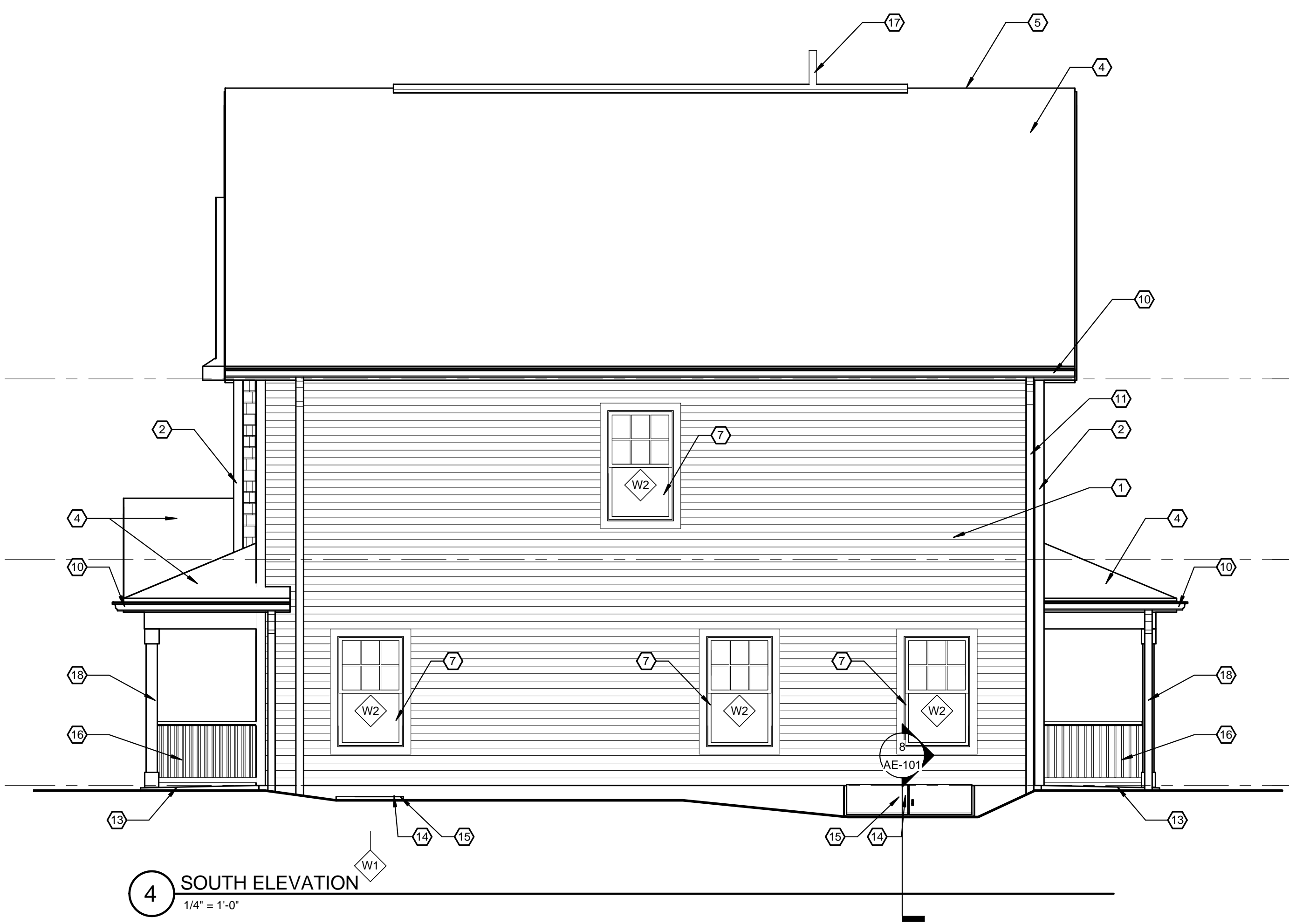


SWBR ARCHITECTS

387 East Main Street
 Rochester, NY 14604-2107
 Voice: 585.232.8300
 Fax: 585.232.9221
 www.swbr.com

THESE DOCUMENTS AND ALL THE IDEAS, ARRANGEMENTS, DESIGNS AND PLANS INDICATED THEREON OR PRESENTED THEREBY ARE OWNED BY AND REMAIN THE PROPERTY OF SWBR ARCHITECTURE, ENGINEERING & LANDSCAPE ARCHITECTURE, P.C. AND NO PART THEREOF SHALL BE UTILIZED BY ANY PERSON, FIRM OR CORPORATION FOR ANY PURPOSE WHATSOEVER EXCEPT WITH THE SPECIFIC WRITTEN PERMISSION OF SWBR ARCHITECTURE, ENGINEERING & LANDSCAPE ARCHITECTURE, P.C. ALL RIGHTS RESERVED ©

ROCHESTER, NEW YORK



REVISIONS			
no.	date	by	description

PROJECT:
 ONEONTA HEIGHTS
 ONEONTA, NEW YORK
 HCR SHARS NO.: 20146049

CLIENT:
 HOUSING VISIONS
 1201 EAST FAYETTE STREET
 SUITE 26, SYRACUSE NY 13210

DRAWING TITLE
 BUILDING E
 EXTERIOR ELEVATIONS

DRAWING NO.	drawn by DB
AE-201	checked E/JG
	proj. mgr. E/JG
	proj. no. 14680

STATUS:
 PROGRESS SET

ISSUE DATE:
 7/24/2015