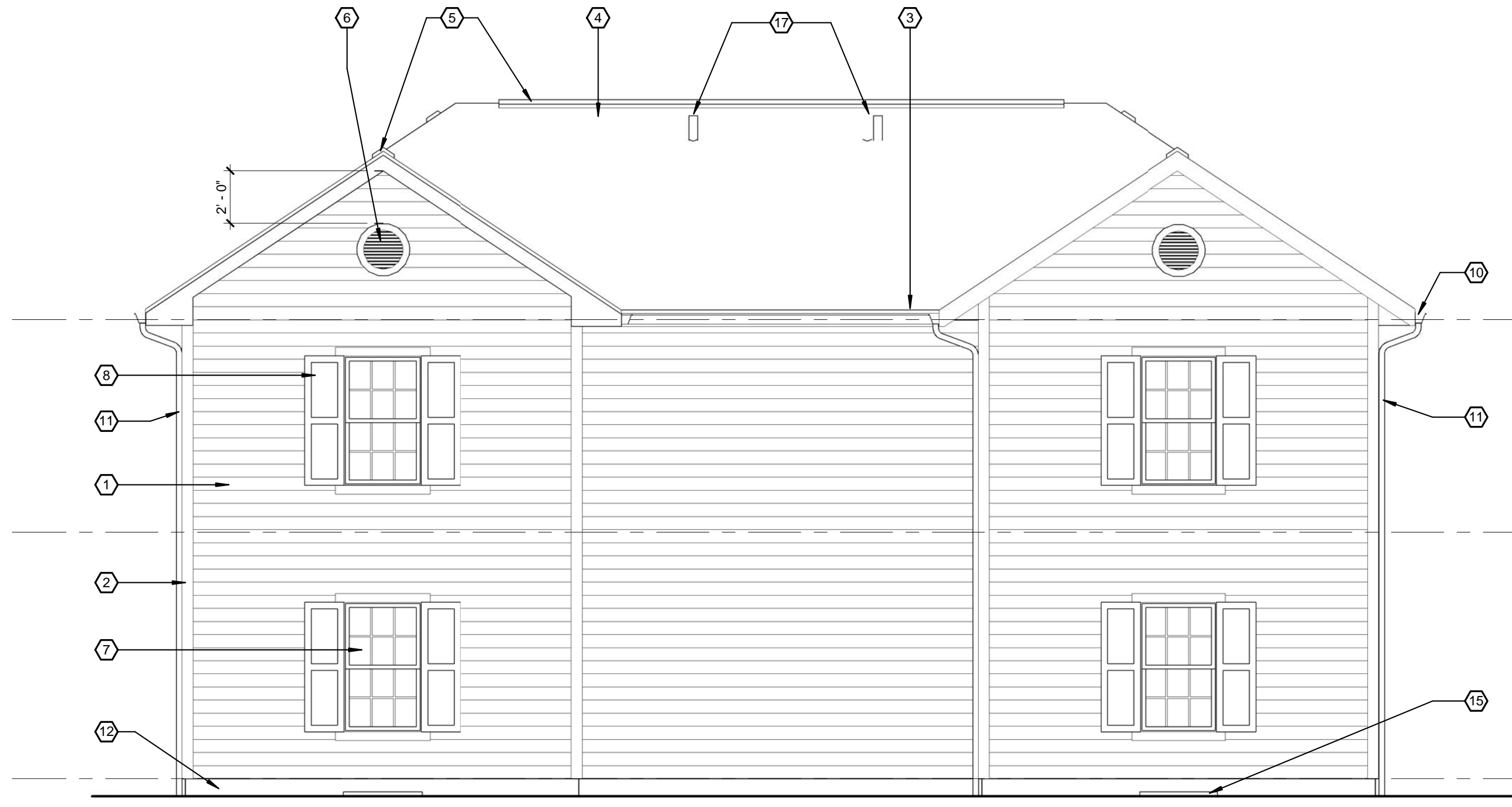


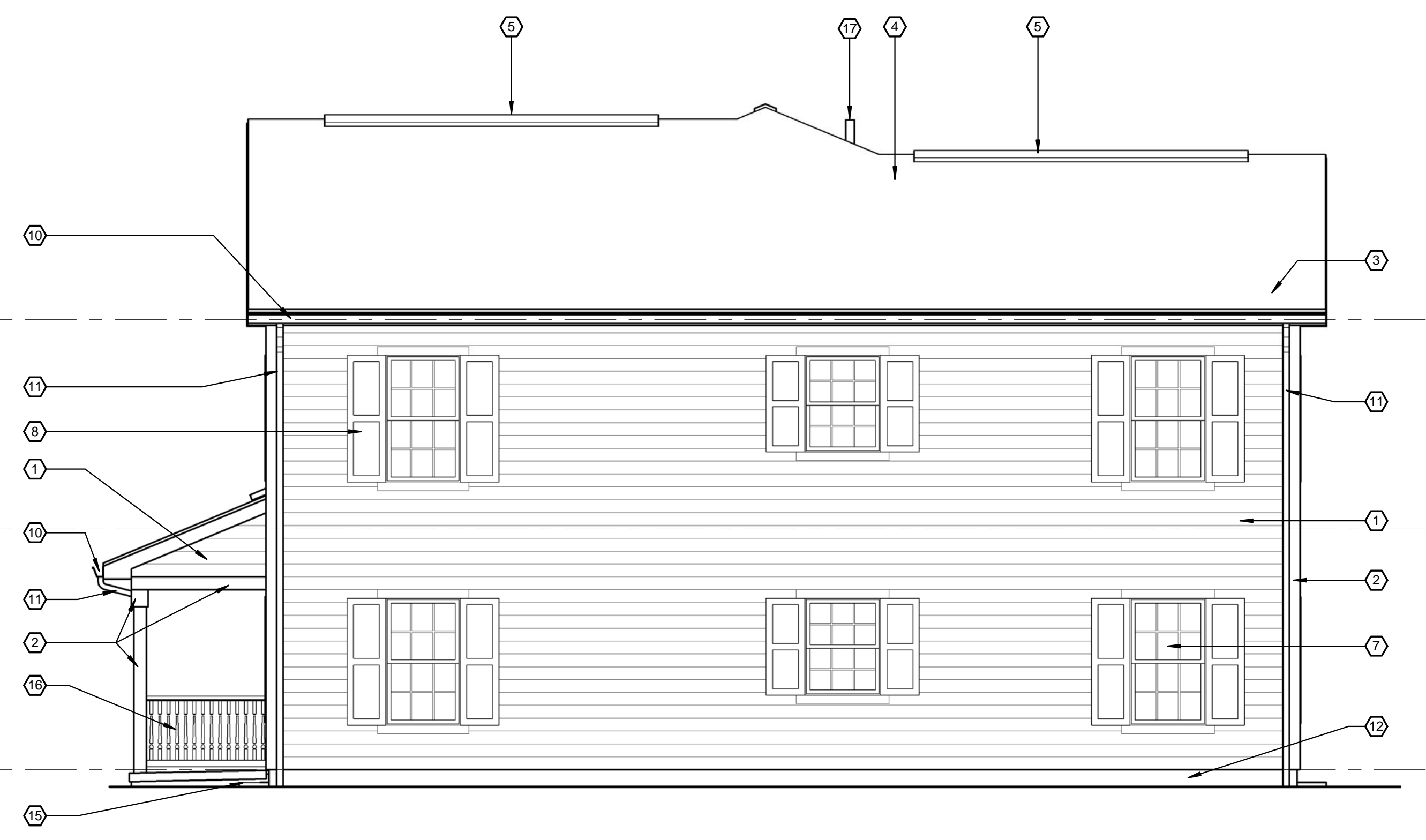
ELEVATION KEYNOTES	
NUMBER	DESCRIPTION
1	FIBER CEMENT SIDING 5" EXPOSURE
2	PVC CORNER TRIM, PAINT
3	ALUMINUM CLAD FASCIA
4	ASPHALT SHINGLES
5	RIDGE VENT
6	DECORATIVE LOUVER, PAINT
7	FIBERGLASS DOUBLE HUNG WINDOW
8	VINYL SHUTTERS
9	HM DOOR & FRAME, PAINT
10	METAL 5" K GUTTER
11	DOWNSPOUT
12	CONCRETE FOUNDATION
13	SLOPING CONCRETE PORCH
14	GLASS BLOCK WINDOW W/ VENT
15	STEEL WINDOW WELL
16	VINYL REINFORCED RAILING
17	RADON MITIGATION VENT PIPE



4 EXTERIOR ELEVATION - SOUTH
1/4" = 1'-0"



3 EXTERIOR ELEVATION - EAST
1/4" = 1'-0"



2 EXTERIOR ELEVATION - WEST
1/4" = 1'-0"



1 EXTERIOR ELEVATION - NORTH
1/4" = 1'-0"



387 East Main Street
Rochester, NY 14604-2107
Voice: 585.232.8300
Fax: 585.232.9221
www.swbr.com

THESE DOCUMENTS AND ALL THE IDEAS, ARRANGEMENTS, DESIGNS AND PLANS INDICATED THEREON OR PRESENTED THEREBY ARE OWNED BY AND REMAIN THE PROPERTY OF SWBR ARCHITECTURE, ENGINEERING & LANDSCAPE ARCHITECTURE, P.C. AND NO PART THEREOF SHALL BE UTILIZED BY ANY PERSON, FIRM OR CORPORATION FOR ANY PURPOSE WHATSOEVER EXCEPT WITH THE SPECIFIC WRITTEN PERMISSION OF SWBR ARCHITECTURE, ENGINEERING & LANDSCAPE ARCHITECTURE, P.C. ALL RIGHTS RESERVED.
ROCHESTER, NEW YORK

S.E.D. CONTROL NUMBERS

REVISIONS

no.	date	by	description

PROJECT:
ONEONTA HEIGHTS
ONEONTA, NEW YORK

CLIENT:
HOUSING VISIONS
1201 EAST FAYETTE STREET
SUITE 26, SYRACUSE NY 13210

DRAWING TITLE
BUILDING D -
EXTERIOR ELEVATIONS

DRAWING NO.	drawn by	ESR
AD-201	checked	EJG
	proj. mgr.	EJG
	proj. no.	14680

STATUS:
PROGRESS SET

ISSUE DATE:
7/23/2015