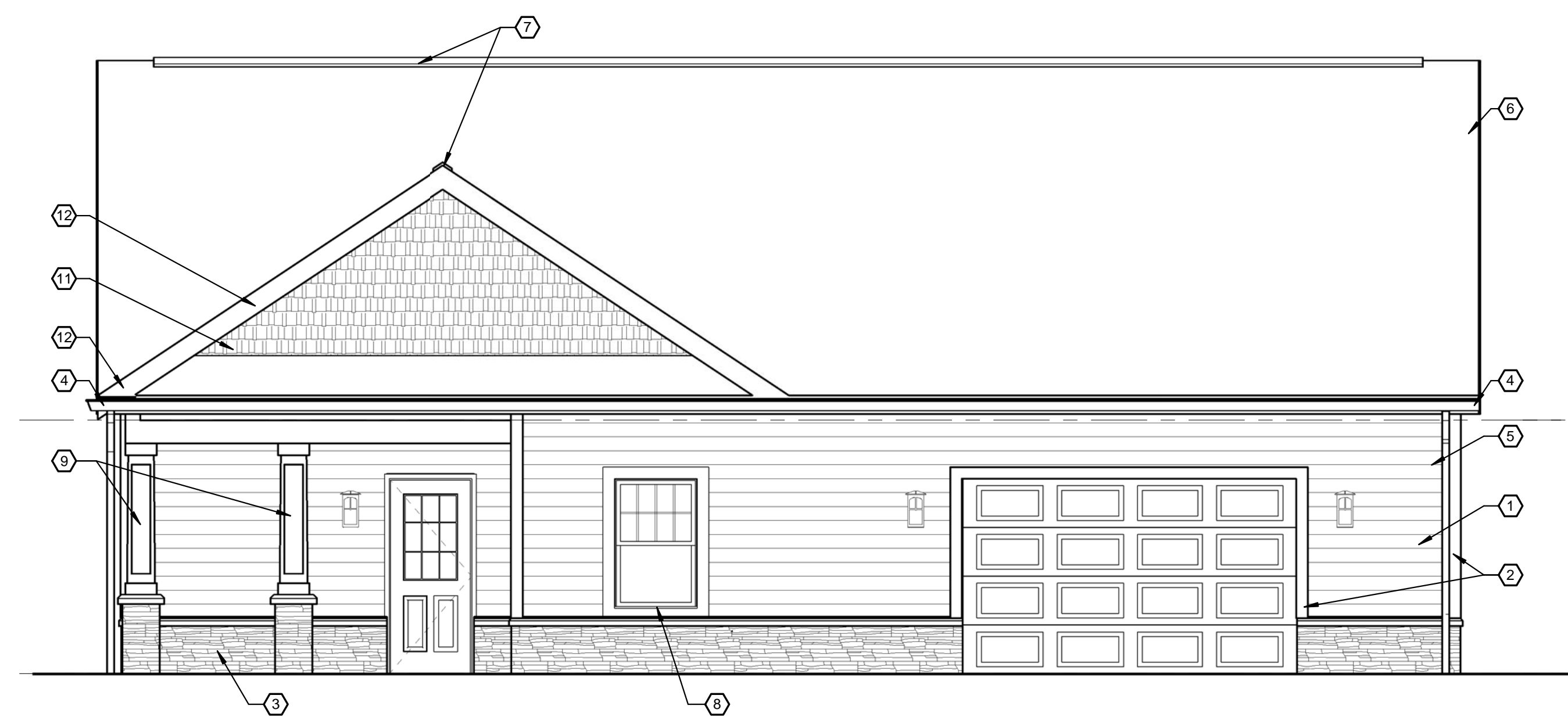
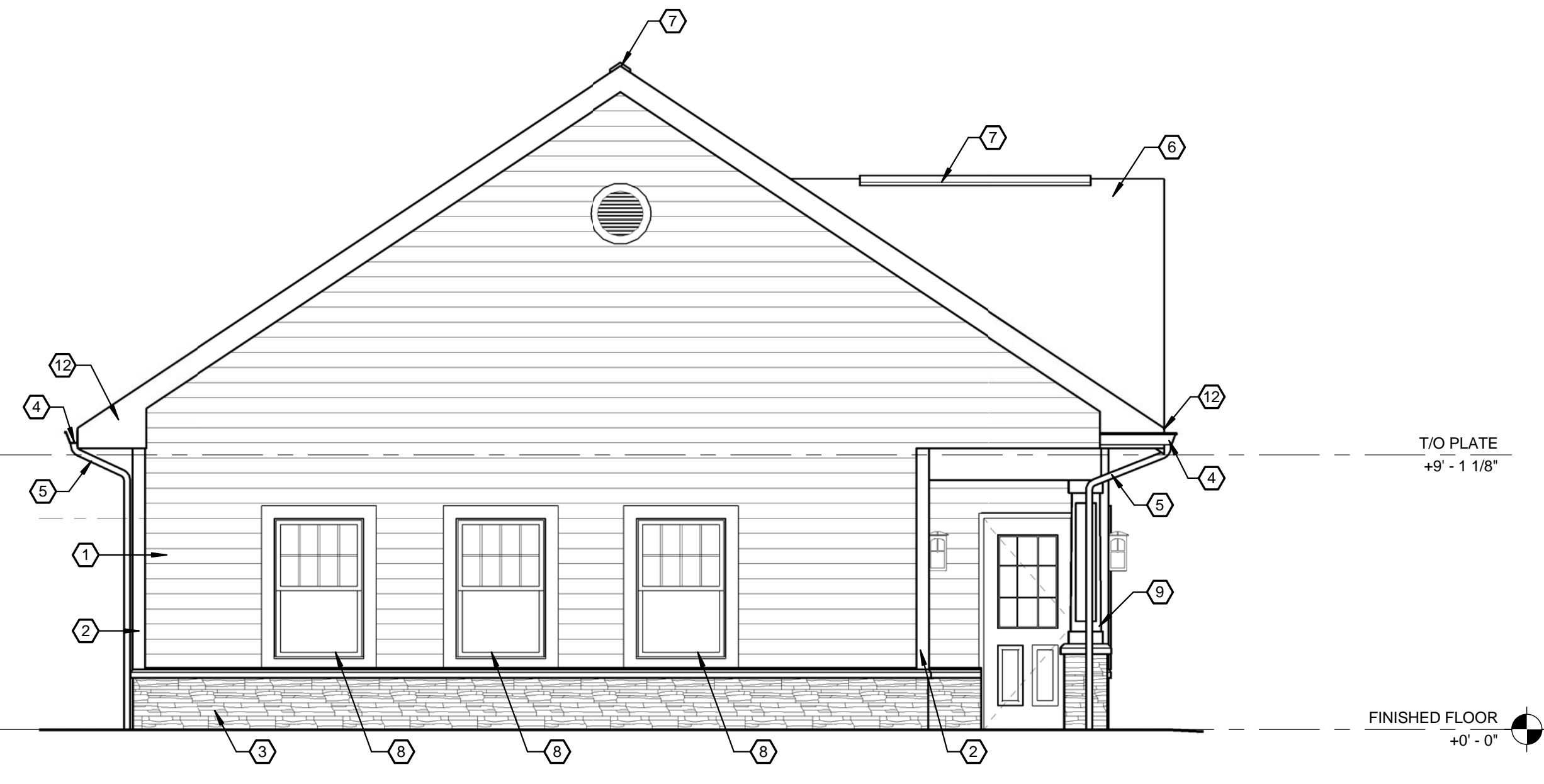


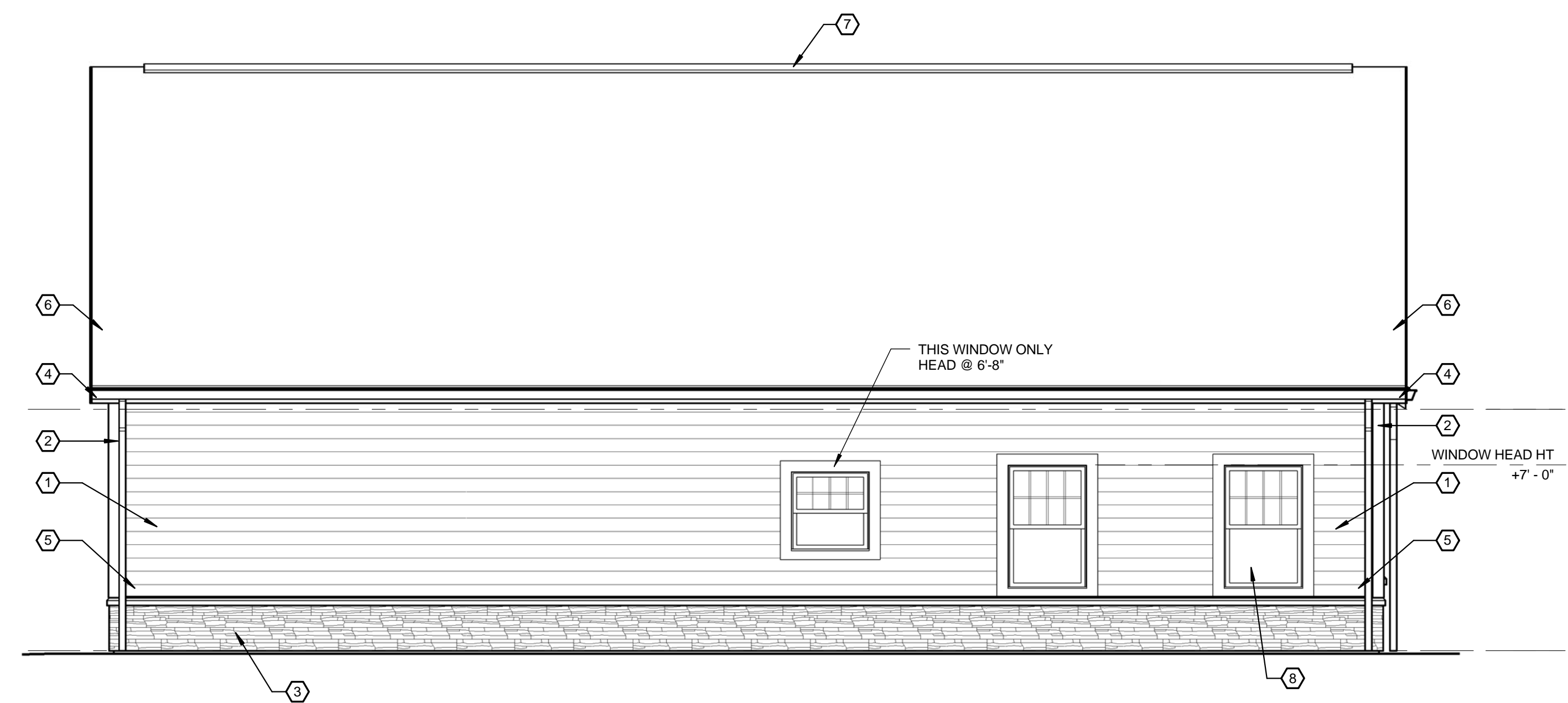
ELEVATION KEY NOTES	
NO.	DESCRIPTION
1	.044 HORIZ. VINYL SIDING, WOOD GRAIN, DOUBLE 5" EXPOSURE - TYPICAL UON
2	5" VINYL CORNER TRIM - TYPICAL
3	CULTURED STONE VENEER - DUTCH QUALITY STONE, PRESTIGE WEATHER LEDGE
4	6" ALUMINUM "K" GUTTER - TYPICAL
5	DOWNSPOUT 3" x 4"
6	ASPHALT SHINGLE ROOFING
7	SHINGLE OVER TYPICAL RIDGE VENT - TYPICAL
8	VINYL DOUBLE HUNG WINDOW
9	1 X PVC COLUMN WRAP
10	ALUMINUM REINFORCED VINYL RAILING SYSTEM - TYPICAL
11	SIMULATED CEDAR SHAKE VINYL SIDING, DOUBLE 7" EXPOSURE, STRAIGHT EDGE
12	ALUMINUM WRAPPED 2 X 8 FASCIA BD W/ 'V' GROOVE



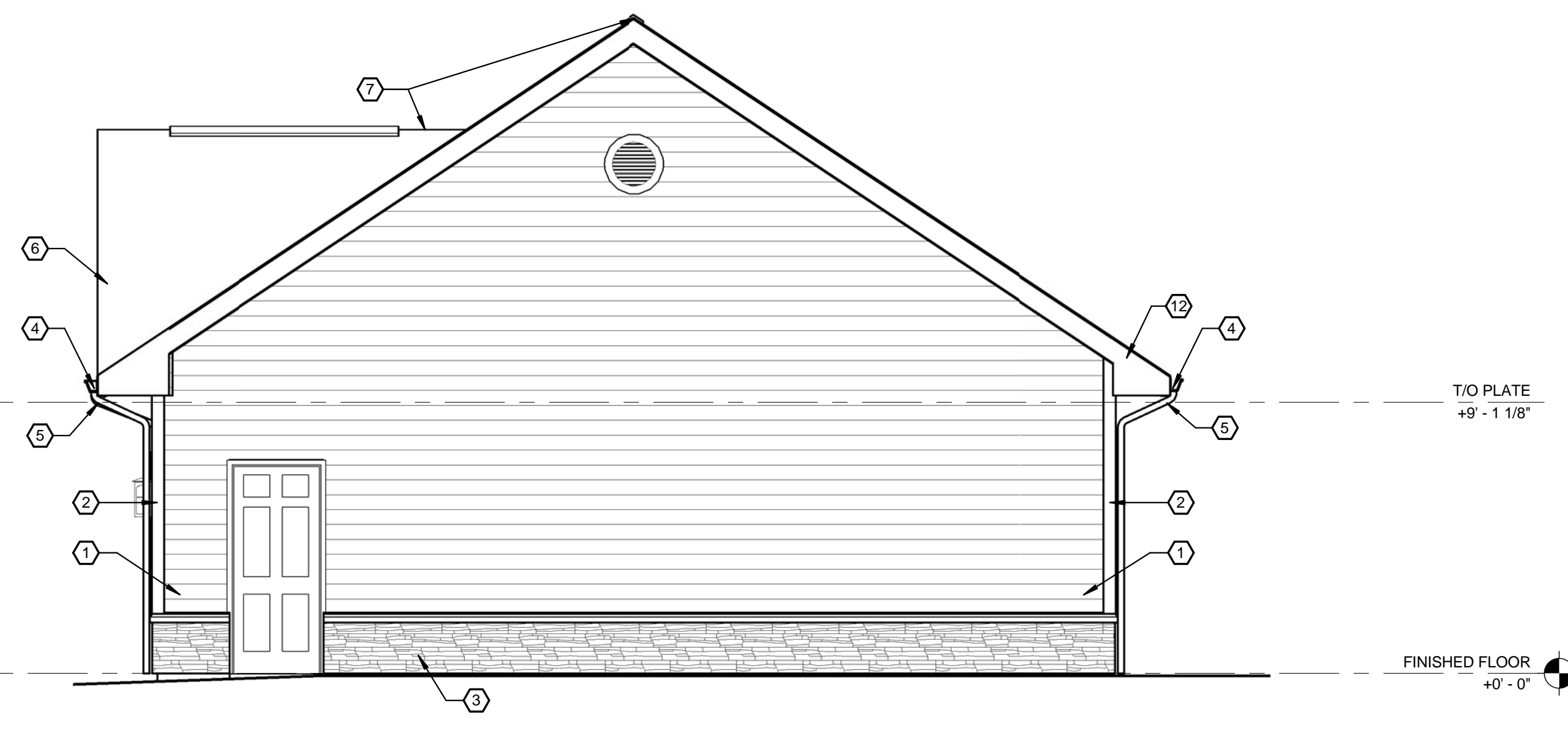
4 EXTERIOR ELEVATION - WEST
1/4" = 1'-0"



3 EXTERIOR ELEVATION - NORTH
1/4" = 1'-0"



2 EXTERIOR ELEVATION - EAST
1/4" = 1'-0"



1 EXTERIOR ELEVATION - SOUTH
1/4" = 1'-0"



387 East Main Street
Rochester, NY 14604-2107
Voice: 585.232.8300
Fax: 585.232.9221
www.swbr.com

THESE DOCUMENTS AND ALL THE IDEAS, ARRANGEMENTS, DESIGNS AND PLANS INDICATED THEREON OR REFERENCED THEREBY ARE OWNED BY AND REMAIN THE PROPERTY OF SWBR ARCHITECTURE, ENGINEERING & LANDSCAPE ARCHITECTURE, P.C. AND NO PART THEREOF SHALL BE UTILIZED BY ANY PERSON, FIRM OR CORPORATION FOR ANY PURPOSE WHATSOEVER EXCEPT WITH THE SPECIFIC WRITTEN PERMISSION OF SWBR ARCHITECTURE, ENGINEERING & LANDSCAPE ARCHITECTURE, P.C. ALL RIGHTS RESERVED.
ROCHESTER, NEW YORK

REVISIONS			
no.	date	by	description

PROJECT:
ONEONTA HEIGHTS
ONEONTA, NEW YORK

CLIENT:
HOUSING VISIONS
1201 EAST FAYETTE STREET
SUITE 26, SYRACUSE NY 13210

DRAWING TITLE
COMMUNITY BUILDING
EXTERIOR ELEVATIONS

DRAWING NO.	drawn by	KAD
A1-201	checked	EJG
	proj. mgr.	EJG
	proj. no.	14680

STATUS:
PROGRESS SET

ISSUE DATE:
07/24/2015