

7/24/2015 11:02:26 AM

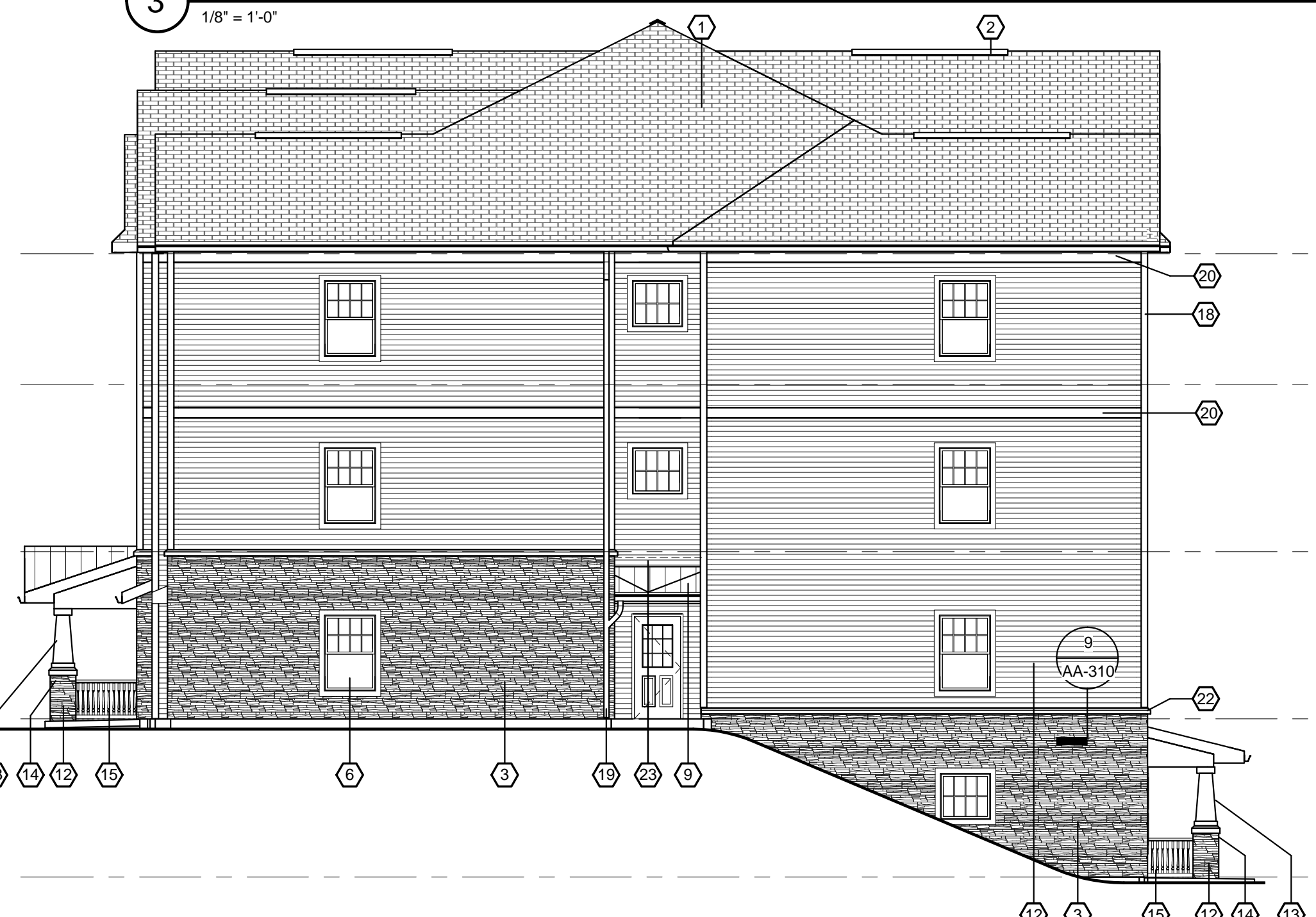
FILE PATH: C:\1-Local Revit Models 2015\14680.00 Housing Visions Oneonta Apartments\_Bldg A.steivanp.rvt



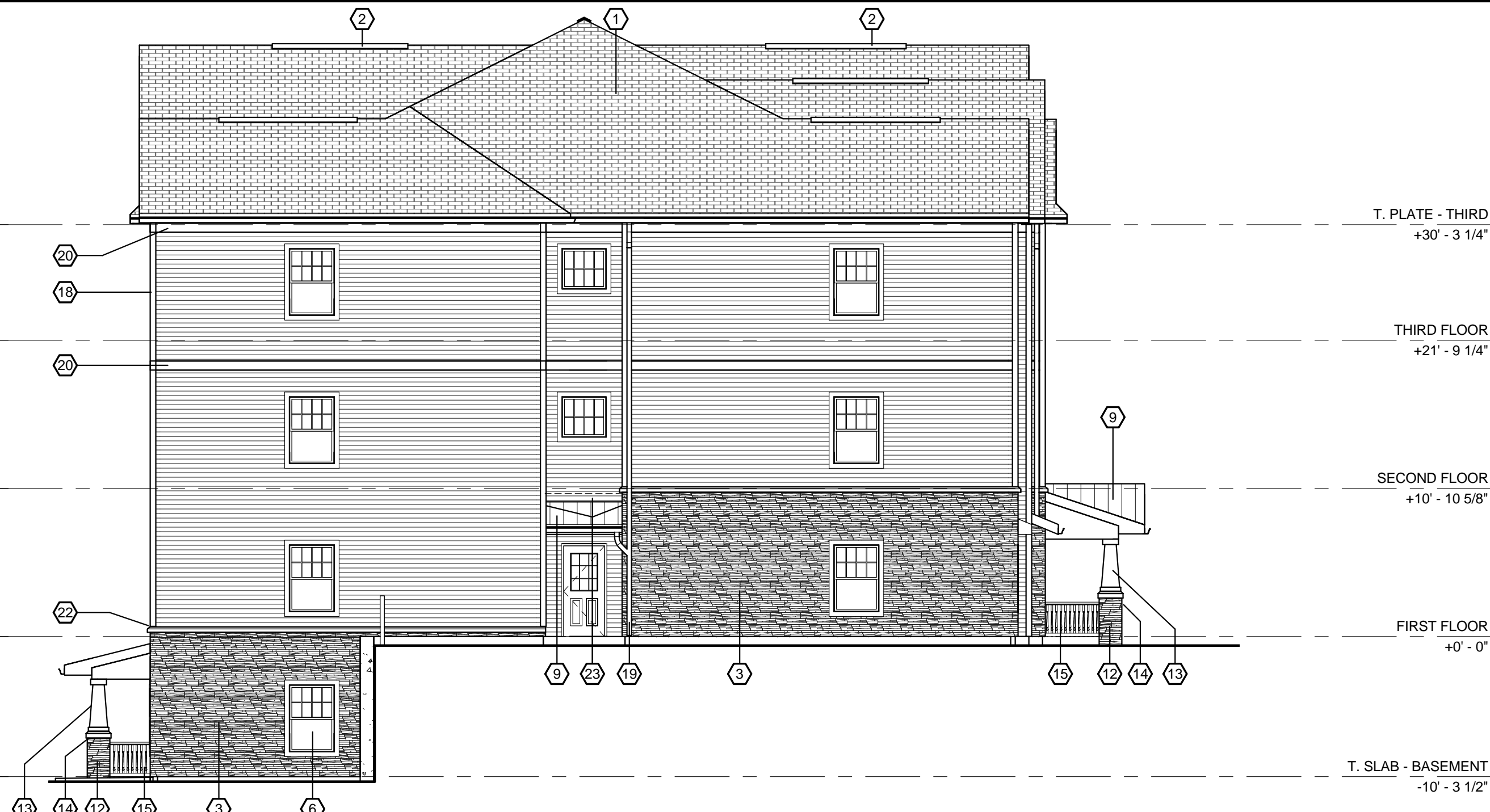
4 EXTERIOR ELEVATION - NORTH  
1/8" = 1'-0"



3 EXTERIOR ELEVATION - SOUTH  
1/8" = 1'-0"



2 EXTERIOR ELEVATION - WEST  
1/8" = 1'-0"



1 EXTERIOR ELEVATION - EAST  
1/8" = 1'-0"

**GENERAL NOTES:**  
 1. ALL EXHAUST VENT COLORS TO BE SELECTED BY ARCHITECT  
 2. PAINT ALL PVC PIPE ROOF PENETRATIONS TO MATCH ROOF SHINGLE COLOR  
 3. ALL EXHAUST VENT ROOF PENETRATIONS TO BE ALIGNED ALONG A SINGLE PLANE

**ELEVATION KEY NOTES**

NO.	DESCRIPTION
1	ASPHALT SHINGLES
2	RIDGE VENT
3	PREFINISHED FIBER CEMENT LAPPED SIDING, 5" EXPOSURE
4	ALUMINUM WRAPPED 1x2 OVER 2x8 FASCIA AT RAKE
5	BLANK LOUVER VENT 2'-8" DIA, PAINT
6	FIBERGLASS DOUBLE HUNG WINDOW
7	5" ALUMINUM "K" GUTTER OVER METAL-WRAPPED 2x8 FASCIA (TYPICAL)
8	CAST STONE SILL
9	STANDING SEAM METAL ROOF
10	VINYL SHUTTER
11	PREFINISHED FIBER CEMENT VERTICAL SIDING
12	ADHERED CONCRETE MASONRY VENEER
13	PREFINISHED FIBER CEMENT TRIM
14	CAST STONE CAP
15	REINFORCED VINYL RAILING
16	WALL-MOUNTED EXTERIOR LIGHT FIXTURE
17	RECESSED FIRE DEPARTMENT KEY BOX @ 6' AFF. BASIS OF DESIGN; KNOX BOX 3200 SERIES ALUMINUM - COORDINATE FINAL LOCATION AND HEIGHT AFF WITH LOCAL FIRE DEPARTMENT
18	5" FIBER CEMENT CORNER TRIM
19	3"x4" ALUMINUM DOWNSPOUT TO HUB
20	1"x8" FIBER CEMENT TRIM BOARD
21	1"x4" FIBER CEMENT TRIM BOARD AT GABLE RAKE
22	PREFINISHED FIBER CEMENT SHIPLAP SIDING, 5" EXPOSURE
23	EXTEND FLASHING 8" UP WALL, MIN



**SWBR ARCHITECTS**

387 East Main Street  
 Rochester, NY 14604-2107  
 Voice: 585.232.8300  
 Fax: 585.232.9221  
 www.swbr.com

THESE DOCUMENTS AND ALL THE IDEAS, ARRANGEMENTS, DESIGNS AND PLANS INDICATED THEREON OR PRESENTED THEREBY ARE OWNED BY AND REMAIN THE PROPERTY OF SWBR ARCHITECTURE, ENGINEERING & LANDSCAPE ARCHITECTURE, P.C. AND NO PART THEREOF SHALL BE UTILIZED BY ANY PERSON, FIRM OR CORPORATION FOR ANY PURPOSE WHATSOEVER EXCEPT WITH THE SPECIFIC WRITTEN PERMISSION OF SWBR ARCHITECTURE, ENGINEERING & LANDSCAPE ARCHITECTURE, P.C. ALL RIGHTS RESERVED ©

ROCHESTER, NEW YORK

**REVISIONS**

no.	date	by	description

**PROJECT:**  
 ONEONTA HEIGHTS  
 ONEONTA, NEW YORK  
 HCR SHARS NO.: 20146049

**CLIENT:**  
 HOUSING VISIONS  
 1201 EAST FAYETTE STREET  
 SUITE 26, SYRACUSE NY 13210

**DRAWING TITLE**  
 BUILDING A  
 EXTERIOR ELEVATIONS

<b>DRAWING NO.</b> AA-201	drawn by ESR checked E/JG proj. mgr. E/JG proj. no. 14680
------------------------------	--

**STATUS:**  
 PROGRESS SET

**ISSUE DATE:**  
 7/10/2015