

8/17/2015 11:16:37 AM

FILE PATH: C:\1-Local Revit Models\2015\14680.00 Housing Visions Oneonta Apartments_Bldg A.ste\enp.rvt

CEILING TYPE LEGEND

- ▽ GYPSUM BOARD CEILING @ BOTTOM OF TRUSS
- ▽ SUSPENDED GYPSUM BOARD CEILING/SOFFIT
- 7'-0" DENOTES CEILING HEIGHT ABOVE FINISHED FLOOR
- 2 2x2 ACOUSTICAL PANEL CEILING AND GRID SUPPORT SYSTEM (ACT-1)
- 3 2x2 ACOUSTICAL PANEL CEILING AND GRID SUPPORT SYSTEM (ACT-2)
- 4 VINYL BEADBOARD SOFFIT
- 5 SELF SUPPORTING 1 HOUR FIRE RESISTANCE RATED HORIZONTAL SHAFT WALL @ BOTTOM OF TRUSS

REFLECTED CEILING PLAN LEGEND

- UNDERSIDE OF FLOOR/ ROOF ASSEMBLY
- ▨ GYP BD CEILING/ SOFFIT
- ▧ ACT CEILING
- ▩ VINYL BEAD BOARD CEILING
- ⊗ DIFFUSER OR GRILLE. REFER TO MECHANICAL DRAWINGS
- PENDANT FIXTURE
- ▭ FLUORESCENT FIXTURE
- ⊙ WALL WASHER
- DOWN LIGHT
- ⊙ CEILING MOUNTED SPEAKER
- ⊙ SMOKE DETECTOR

GENERAL NOTES

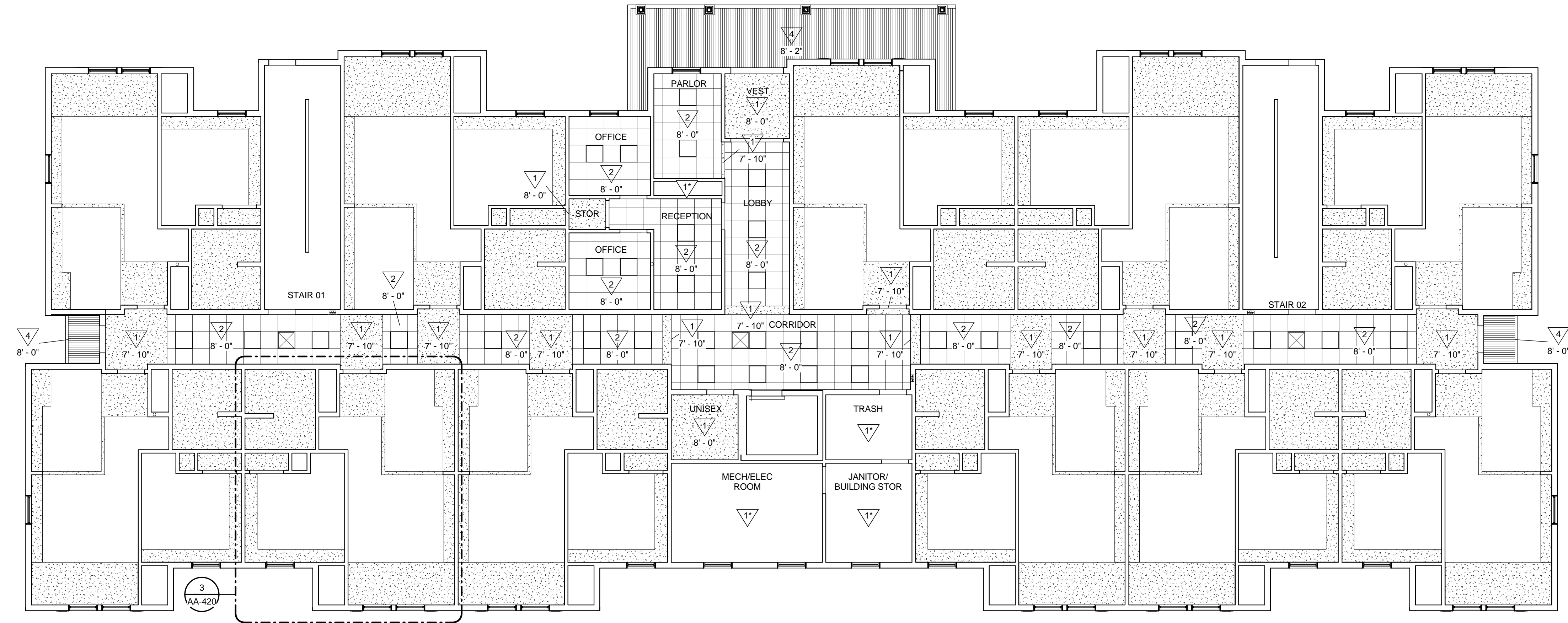
- GYPSUM BOARD CEILING AREAS (SHOWN BY POCHÉ) ON THE RCP'S ARE THOSE THAT ARE SUSPENDED FROM THE FLOOR OR ROOF STRUCTURE. A GYPSUM BOARD MEMBRANE WILL ALWAYS BE A PART OF THE FLOOR/CEILING OR ROOF/CEILING ASSEMBLY. FOR THOSE AREAS SHOWN WITH A SUSPENDED GYPSUM BOARD CEILING, OR A SUSPENDED ACOUSTICAL TILE CEILING NEED ONLY TO BE FIRE TAPED. ALL REMAINING AREAS WILL BE FINISHED.
- SEE ENLARGED PLANS FOR CEILING ELEVATIONS IN APT UNITS ON SHEET A-420
- REFER TO ELECTRICAL PLANS FOR LIGHTING LOCATIONS

PLAN KEY NOTES

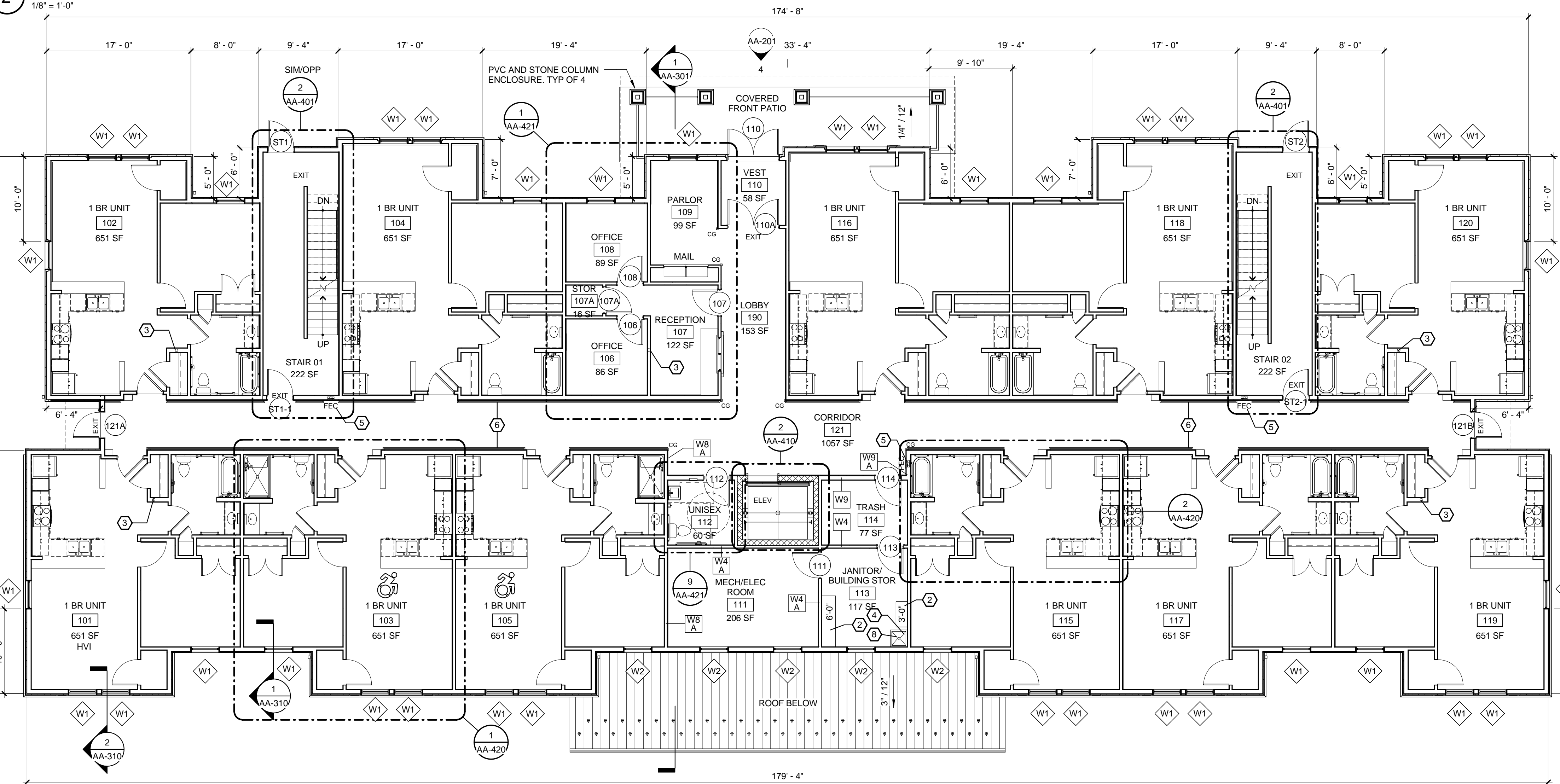
NO.	DESCRIPTION
1	WIRE COAT ROD AND SHELF AT 4'-0" AFF OVER CONCEALED WOOD BLOCKING. SEE 21/AA-421
2	5 PLAIN SHELVES, 20" DEEP, ON HEAVY DUTY ADJUSTABLE BRACKETS & STANDARDS.
3	4" VERTICAL PVC PASSIVE RADON MITIGATION PIPE FROM SUB SLAB DRAINAGE COURSE TO ABOVE ROOF. SEE ELECTRICAL DRAWINGS FOR ELECTRICAL JUNCTION BOX IN ATTIC FOR FUTURE IN-LINE FAN INSTALLATION
4	MOP & BROOM HOLDER
5	SEMI-RECESSED FIRE EXTINGUISHER CABINET (LION) & EXTINGUISHER - FIRE RATED CABINET WHEN INSTALLED IN FIRE RESISTANCE RATED PARTITION CONSTRUCTION. MOUNT BOTTOM AT +6" AFF
6	WOOD HANDRAIL (STAIN), BRACKETS AND TRIM ON ALL CORRIDOR WALLS @ 2'-10" AFF
7	MOP SINK
8	MOP SINK
9	ADA COMPLIANT GRAB BAR - SEE ELEVATIONS FOR SIZES
10	RECESSED DOUBLE ROLL TOILET PAPER DISPENSER
11	WATER CLOSET - SEE PLUMBING DRAWINGS
12	SCHEDULED WALL BASE
13	2'-0" x 3'-0" MIRROR, MOUNT BTM AT 40" AFF
14	LAVATORY - PROVIDE INSULATION (TRAP WRAP) AT ALL EXPOSED PIPING BELOW SINKS - SEE PLUMBING DRAWINGS
15	LIQUID SOAP DISPENSER, MOUNT CENTERLINE AT 4'-0" AFF
16	RECESSED COMBINATION PAPER TOWEL DISPENSER AND WASTE RECEPTACLE. MAINTAIN REQ'D WALL RATING
17	ROBE HOOK
18	RECESSED SANITARY NAPKIN DISPOSAL. MAINTAIN REQ'D WALL RATING
19	COAT ROD AND PLAM SHELF AT 4'-0" AFF OVER CONCEALED WOOD BLOCKING. SEE 20/AA-421
20	WD APRON AND ANGLED CLOSURE PANEL. SEE 22/AA-421
21	SSM COUNTER TOP AND BACKSPLASH, CONT BEHIND RANGES
22	PERIMETER FOUNDATION DRAIN, DRAIN TO DAYLIGHT

FLOOR PLAN NOTES:

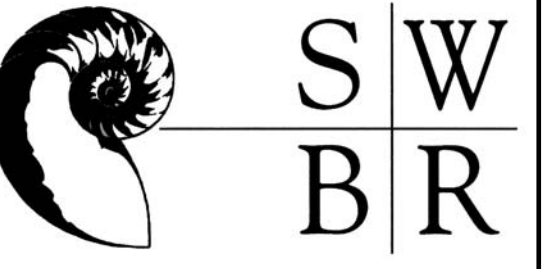
- EXTERIOR WALL DIMENSIONS ON THE STRUCTURAL FOUNDATION PLAN ARE TO THE EXTERIOR FACE OF FOUNDATION
- EXTERIOR WALL DIMENSIONS ON THE ARCHITECTURAL FLOOR PLAN ARE TO THE EXTERIOR FACE OF STUDS
- CG = CORNER GUARD
- SEE 1/4" = 1'-0" SCALE PLANS FOR WINDOW LOCATIONS
- TYPE 'A' ACCESSIBLE UNIT PER ICC/ANSI A117.1-2003 CHAPTER 10, SECTION 1003 DENOTED BY THE SYMBOL:



2 FIRST FLOOR REFLECTED CEILING PLAN



1 FIRST FLOOR PLAN



387 East Main Street
Rochester, NY 14604-2107
Voice: 585.232.8300
Fax: 585.232.9221
www.swbr.com

THESE DOCUMENTS AND ALL THE IDEAS, ARRANGEMENTS, DESIGNS AND PLANS INDICATED THEREON OR PRESENTED THEREBY ARE OWNED BY AND REMAIN THE PROPERTY OF SWBR ARCHITECTURE, ENGINEERING & LANDSCAPE ARCHITECTURE, P.C. AND NO PART THEREOF SHALL BE UTILIZED BY ANY PERSON, FIRM OR CORPORATION FOR ANY PURPOSE WHATSOEVER EXCEPT WITH THE SPECIFIC WRITTEN PERMISSION OF SWBR ARCHITECTURE, ENGINEERING & LANDSCAPE ARCHITECTURE, P.C. ALL RIGHTS RESERVED.
ROCHESTER, NEW YORK

REVISIONS			
no.	date	by	description

PROJECT:
ONEONTA HEIGHTS
ONEONTA, NEW YORK
HCR SHARS NO.: 20146049

CLIENT:
HOUSING VISIONS
1201 EAST FAYETTE STREET
SUITE 26, SYRACUSE NY 13210

DRAWING TITLE
BUILDING A
FIRST FLOOR PLAN & REF
CEILING PLAN

DRAWING NO.	drawn by	ESR
AA-102	checked	EJG
	proj. mgr.	EJG
	proj. no.	14680

STATUS:
50% CONSTRUCTION
DOCUMENTS
ISSUE DATE:
7/31/2015

10,515 GROSS SF

